

PART OF THE NE. 1/4, OF SECTION 36, T.6N., R.2W., S.L.B. & M.  
BJ BALLARD HOLDING LLC SUBDIVISION

695

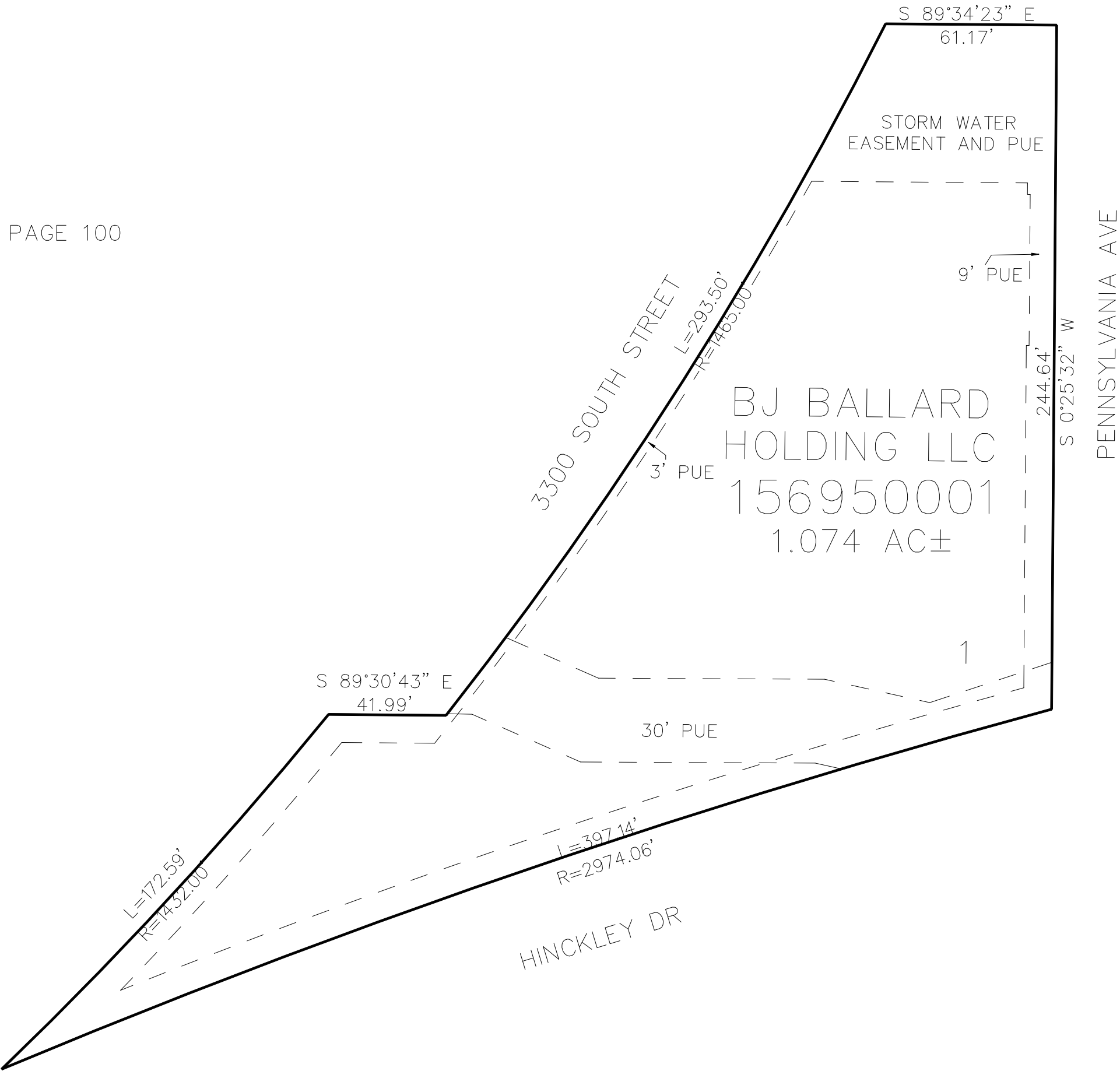
TAXING UNIT: 569

IN OGDEN CITY  
SCALE 1" = 40'

SEE PAGE 100

SEE PAGE 100

SEE PAGE 4



10' UTILITY & DRAINAGE EASEMENTS EACH  
SIDE OF PROPERTY LINES AS INDICATED  
BY DASHED LINES EXCEPT AS OTHERWISE  
SHOWN.

FOR COMPLETE ENG DATA SEE  
ORIGINAL DEDICATION PLAT IN  
BOOK 85, PAGE 87 OF RECORDS.